

# Haverford State Update

Pictured here are the land Development Plans submitted in August for the former Haverford State Hospital property. The Preliminary approval is scheduled for November.

The outdoor Recreation component consists of walking and bike trails, 4 multi-use ball fields, 2 picnic pavilions, a dog run area, a splash park, basketball courts, an amphitheater and 120 acres of open space.

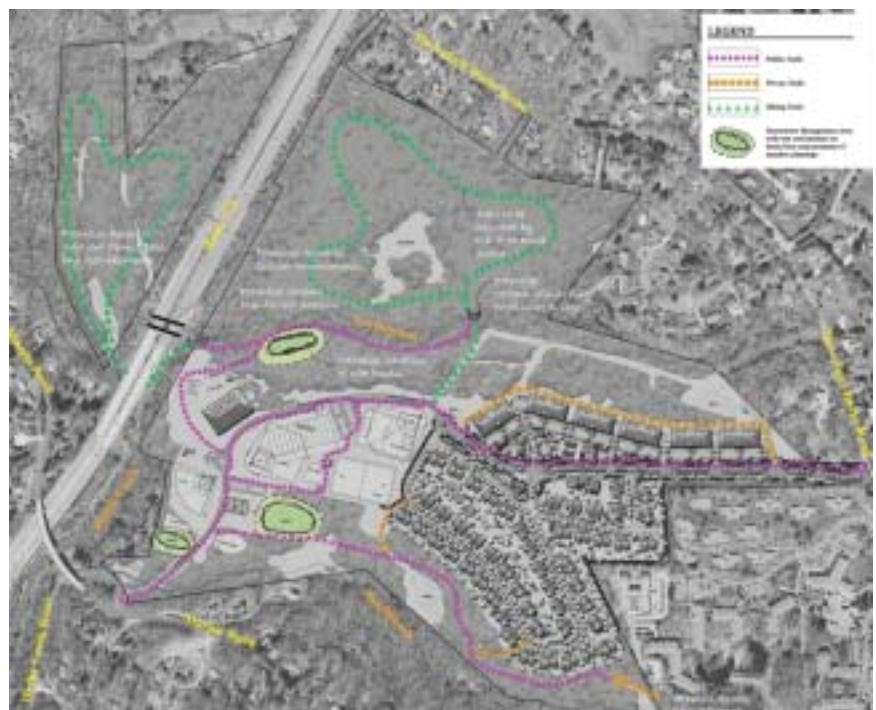
The Indoor facility we recommended is between 40 - 50,000 square feet; (about the size of the Skatium) containing a walking track, 2 full size basketball / volleyball courts, a wellness area, a community lap pool and leisure pool, community meeting rooms and a environmental / nature center.

A facility planner will assist the Board of Commissioners and the public in understanding the operating cost and associated fee structure for the indoor area. Pending approval by the Board of Commissioners for land development and funding, the first phase of the outdoor area could be available to residents in Fall 2008.

The current construction cost estimate for the indoor area is \$8 - 10 million and the outdoor area is \$3 million. In keeping with the resident's survey, the cost of the Recreation facilities could be funded with the \$17.5 million the developer will pay the Township for the private sector.



The Community Recreation area, open space, and private sector.



Preliminary sketches of possible trails and scouting area.